

Access Management Planning vs. Practice

**6th National Conference on
Access Management
August 30, 2004**

Sandra L. Gorman, P.E.



**Kimley-Horn
and Associates, Inc.**



Introduction

- **Access Management – A Good Policy**
 - Safety benefits
 - Capacity benefits
 - Aesthetic benefits
 - Overall – very useful in transportation planning
- **“What should we consider when applying access management?”**
 - Driveway spacing
 - Signal spacing
 - Safety
 - Is there more?
- **“Why should we look at the bigger picture?”**
 - In-fill situations
 - Operational issues
 - Overall affect on corridor as a whole
- **Need to look at more than just driveway and median opening placement.**



Disclaimer

- The examples you will see are real, all names and faces have been changed to protect the innocent.
- The examples you see here are innocent until proven guilty.
I am an engineer. I am not a lawyer, I am not a land use planner, I am not a policy maker. Nor do I play one on TV.
The examples you see here are innocent until proven guilty.
All names and faces have been changed to protect the innocent.
The views represented here are not the reflection of the management or employees of this station.
- The views represented here are not a reflection of views of the management or employees of this station.
- I am an engineer. I am not a lawyer, I am not a land use planner, I am not a policy maker. Nor do I play one on TV.



The Challenges

- Look at a variety of real projects
- Just a general overview
- Access Management vs.:
 - The Environment
 - Future Development
 - Land use
 - Safety
 - The Drivers
 - “The Big Picture”



Access Management vs. The Environment

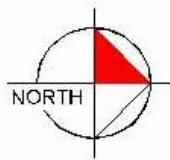


Kimley-Horn
and Associates, Inc.

Access Management vs. The Environment

- Wetlands make up a large portion of our Florida landscape – 20% of the wetlands in the lower US are located in Florida
- Northwest Florida has over 120,000 acres of wetlands alone
- Wetland restraints often times result in less than ideal situations





Access Management vs. Future Development

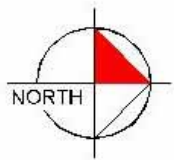


Kimley-Horn
and Associates, Inc.

Access Management vs. The Environment

“To what extent should
we consider future development when
granting access rights?”





Access Management vs. Land Use



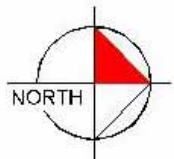
Kimley-Horn
and Associates, Inc.

Access Management vs. Land Use

“Should the proposed land use be considered when granting access rights?”

“Should there be some sort of provision in place to account for change in access to benefit the corridor as a whole?”





**ZONED
FOR
COMMERCIAL**

CHURCH

**FULL
MEDIAN
OPENING**

**DIRECTIONAL
MEDIAN
OPENING**

**PROPOSED
RETAIL**

**PROPOSED
RETAIL**

**PROPOSED
RETAIL**

**EXISTING
RETAIL**

**TRAFFIC
SIGNAL**

Access Management vs. Safety



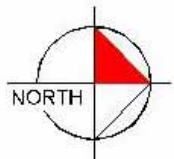
Kimley-Horn
and Associates, Inc.

Access Management vs. Safety

- **Access Management improves safety on roadways**
 - True - has been proven by many sources
- **May improve safety at access point; but impacts to the corridor as a whole should also be considered.**
 - Redistribution of left turns and u-turns to other median openings

“How do you predict future safety concerns as a result of access management?”





**ZONED
FOR
COMMERCIAL**

CHURCH

**FULL
MEDIAN
OPENING**

**DIRECTIONAL
MEDIAN
OPENING**

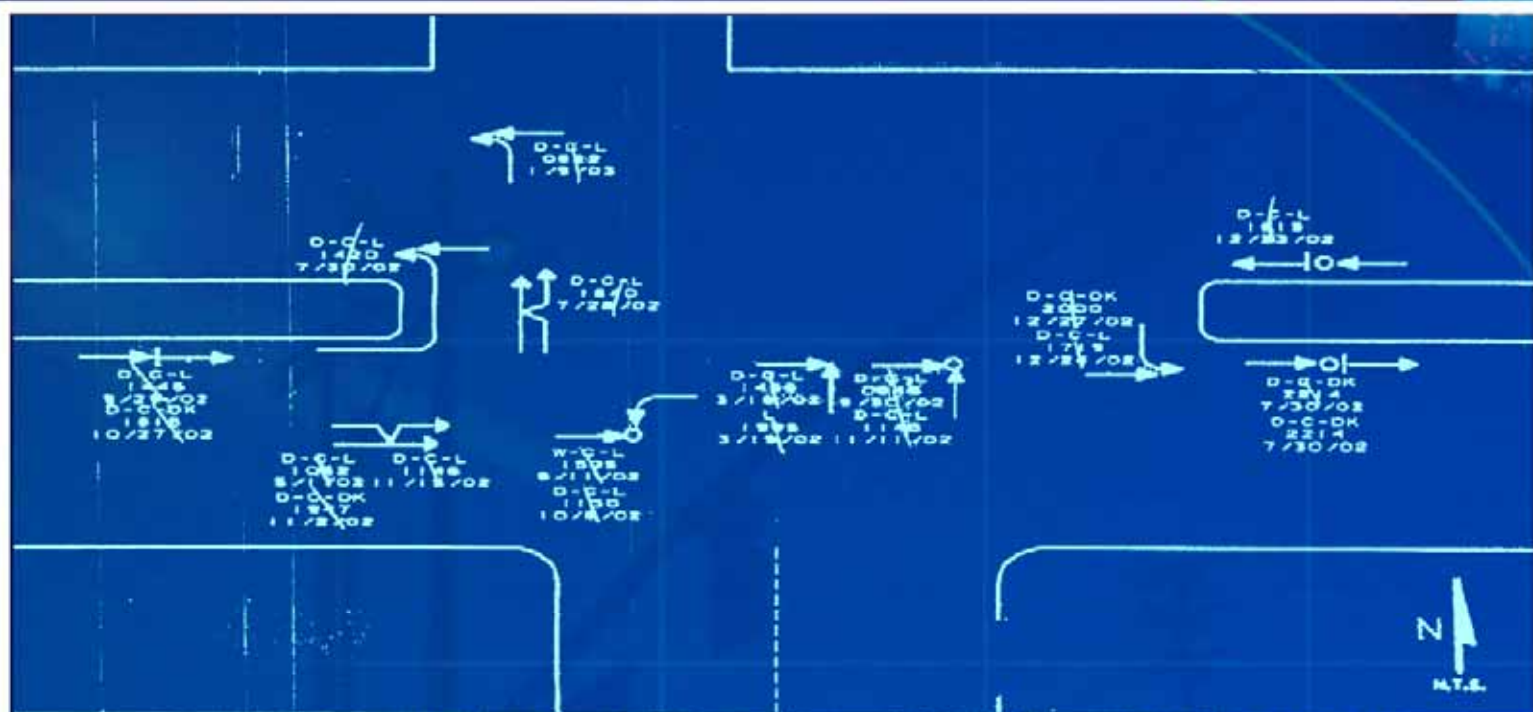
**PROPOSED
RETAIL**

**PROPOSED
RETAIL**

**PROPOSED
RETAIL**

**EXISTING
RETAIL**

**TRAFFIC
SIGNAL**



COLLISION SYMBOLS

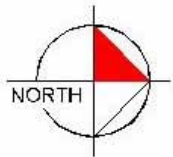


CONDITION CODES

PAVEMENT CONDITION
 D=DRY W=WET U=UNKNOWN
 WEATHER CONDITION
 C=CLEAR R=RAIN F=FOG
 LIGHT CONDITION
 L=DAYLIGHT OK=DARK
 TIME OF DAY (MILITARY)

CRASH SUMMARY

	PROPERTY DAMAGE ONLY	INJURY	FATAL	TOTAL
DAYTIME	9	5	0	14
NIGHTTIME	3	2	0	5
TOTAL	12	7	0	19



Access Class
'A'

Access Class
'B'

EXISTING RETAIL

EXISTING SIGNAL

EXISTING RETAIL

PROPOSED RETAIL

PROPOSED RETAIL

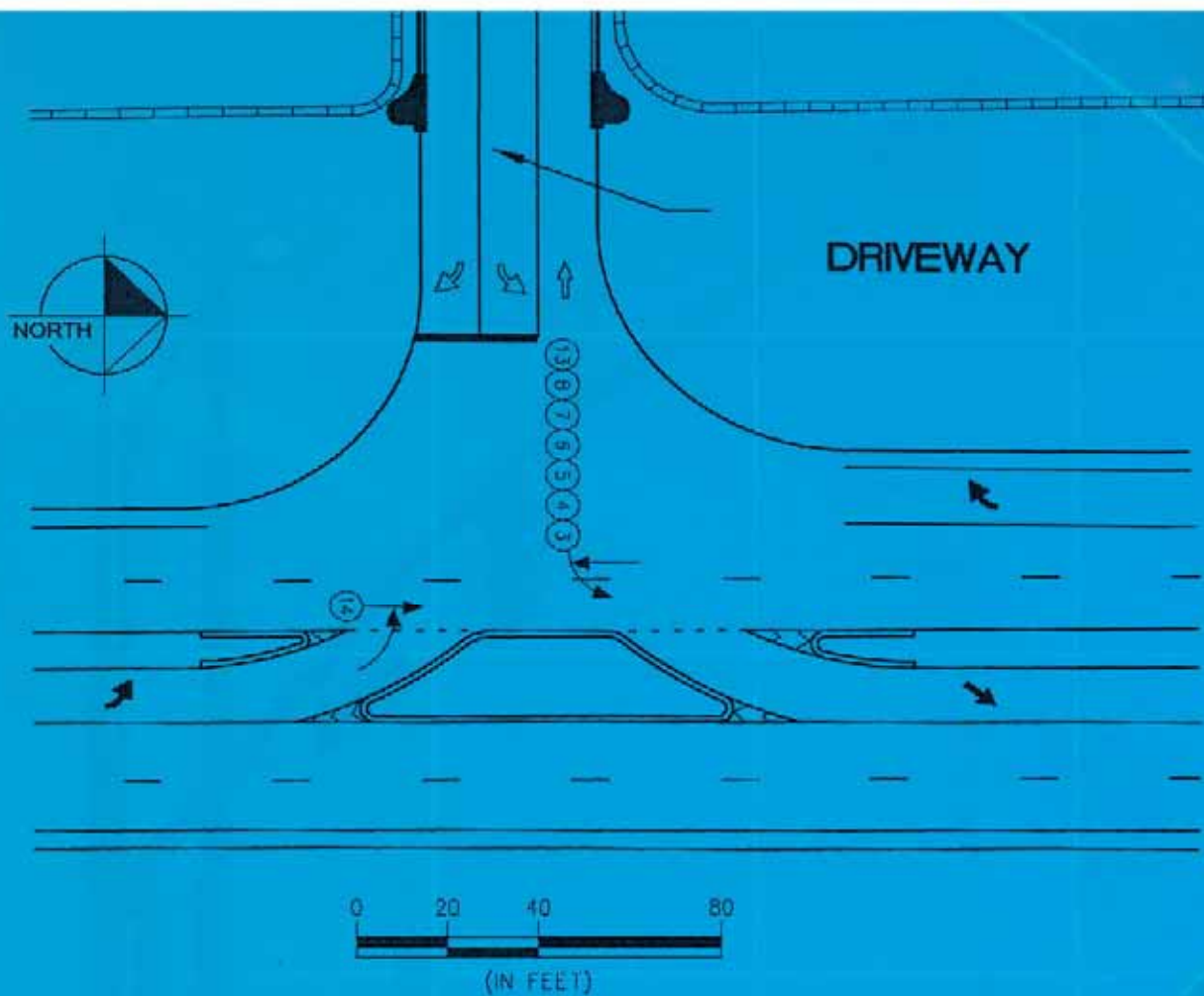
FUTURE SIGNAL

DIRECTIONAL MEDIAN OPENING




FULL MEDIAN OPENING


RIGHT IN RIGHT OUT ONLY








 MOVING VEHICLE
 PEDESTRIAN
 PARKED VEHICLE

 HEAD ON
 REAR END
 ANGLE

 LEFT TURN
 BACKING
 SIDE SWIPE

 FIXED OBJECT
 OUT OF CONTROL
 JACKKNIFE

Access Management vs. The Drivers



Kimley-Horn
and Associates, Inc.

Access Management vs. The Drivers

“What is the primary purpose of this roadway?”

- FIHS
- Major regional arterial
- Collector road
- Local street

“Who are the major users of this roadway?”

- Population of the community
- Types of vehicles using the roadway
- Types of customers attracted to the local land uses

**Many times the answers to these
questions conflict!**



Access Management vs. The Drivers

- **Florida is unique as it serves a very diverse population.**
 - High concentration of elderly in certain parts of the state
 - High concentration of non-familiar drivers (tourists) in certain parts of the state

“How should access management be used in these situations?”

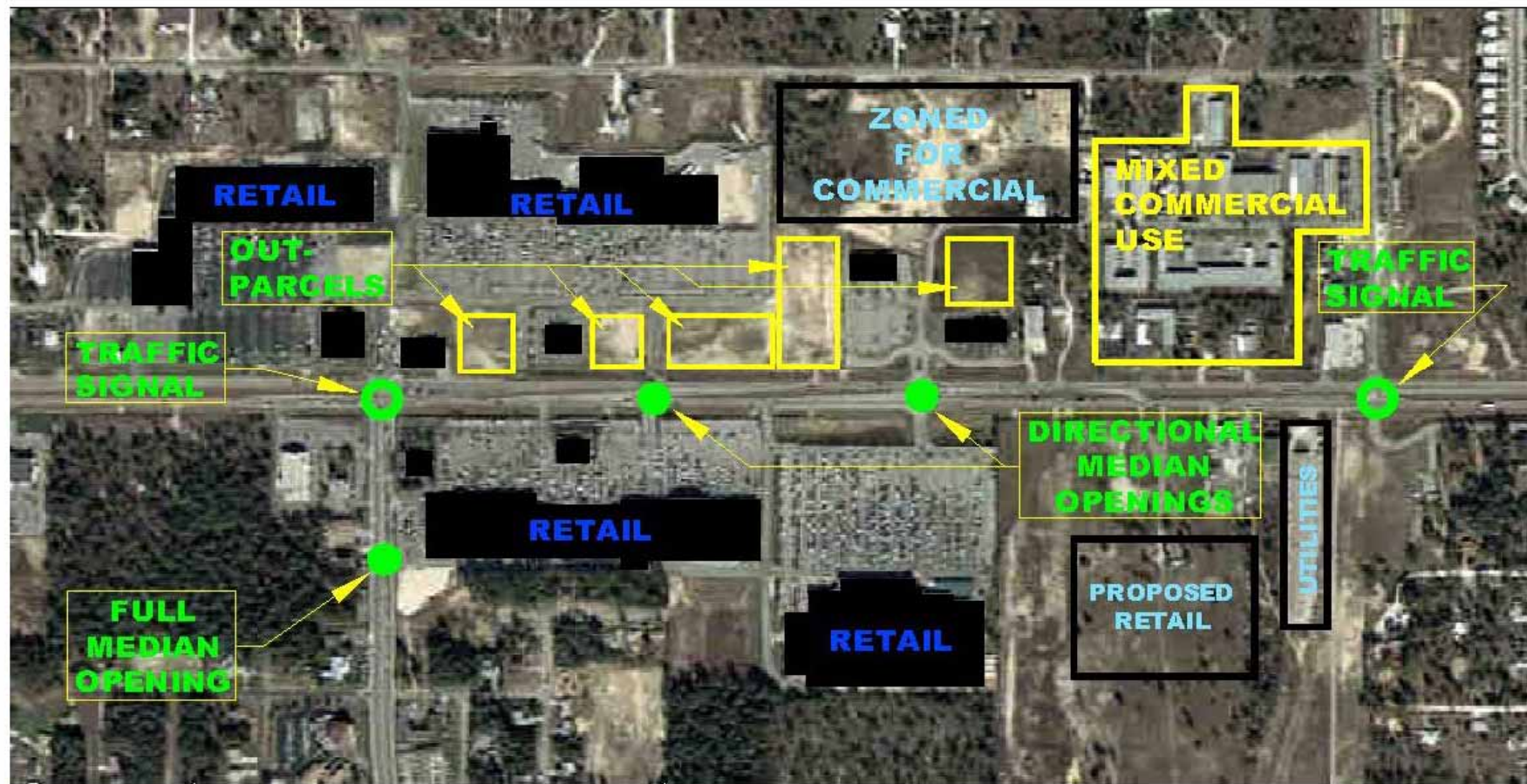
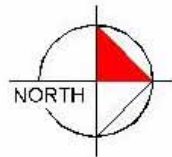


Access Management vs. The Drivers

“Do the access management standards, as written, make sense for this community?”









Access Management vs. “The Big Picture”

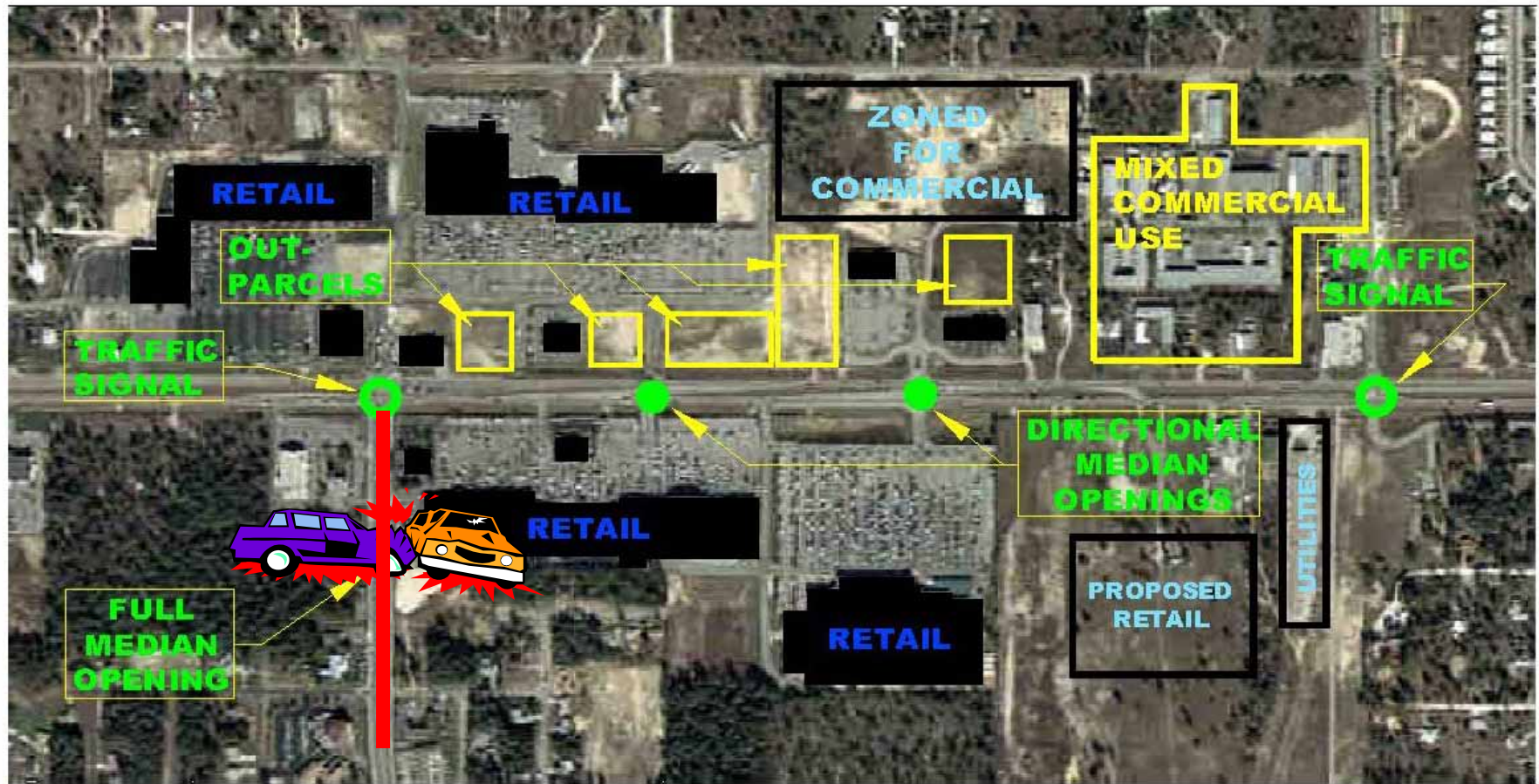
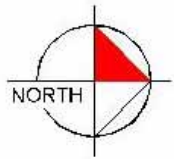


Kimley-Horn
and Associates, Inc.

Access Management vs. “The Big Picture”

“Should
access management guidelines
evaluate just the driveway/signal/connection
spacing, or the access management plan
of a project as a whole?”







So Now What?

Disclaimer

- The examples you will see are real, all names and faces have been changed to protect the innocent.
- The examples you see here are innocent until proven guilty.
- The views represented here are not a reflection of views of the management or employees of this station.
- I am an engineer. I am not a lawyer, I am not a land use planner, I am not a policy maker. Nor do I play one on TV.



So now what?

Yes, each of these examples are unique and have SEVERAL other details that could have, and probably did impact access decisions

Purpose wasn't to dispute whether or not the access as granted or denied was justified, not justified etc... but just to identify some of the issues that come up when putting access management into practice.



The background is a dark blue-tinted photograph of a city street at night. It features a grid pattern and a large, thin green arc that starts from the top right and curves towards the bottom right. In the top right corner, there is a small inset image of a car's side-view mirror reflecting city lights. In the bottom right corner, there is a close-up of a green traffic light.

Ask the Questions!

Ask The Questions!

“What should we consider when applying access management to this project?”

“How will the access management standards currently in place apply to this project?”

“Is there a better way to provide access to this property?”



Ask The Questions!

“How will that affect the corridor as a whole?”

Safety
Operations
Future Development

“Did I leave the iron on?”

“Does this access management application make sense for this community?”

And many, many, more...



Kimley-Horn
and Associates, Inc.

Thank you!

Sandra L. Gorman, P.E.



Kimley-Horn
and Associates, Inc.

4305 Highland Park Boulevard
Lakeland, Florida 33813

863-701-8702

sandra.gorman@kimley-horn.com



Kimley-Horn
and Associates, Inc.