



[www.access-board.gov](http://www.access-board.gov)



# TRB National Roundabout Conference (May 2005)

## Accessibility and Roundabouts Upcoming ADA Requirements

Scott J. Windley  
US Access Board  
PROW Team Leader



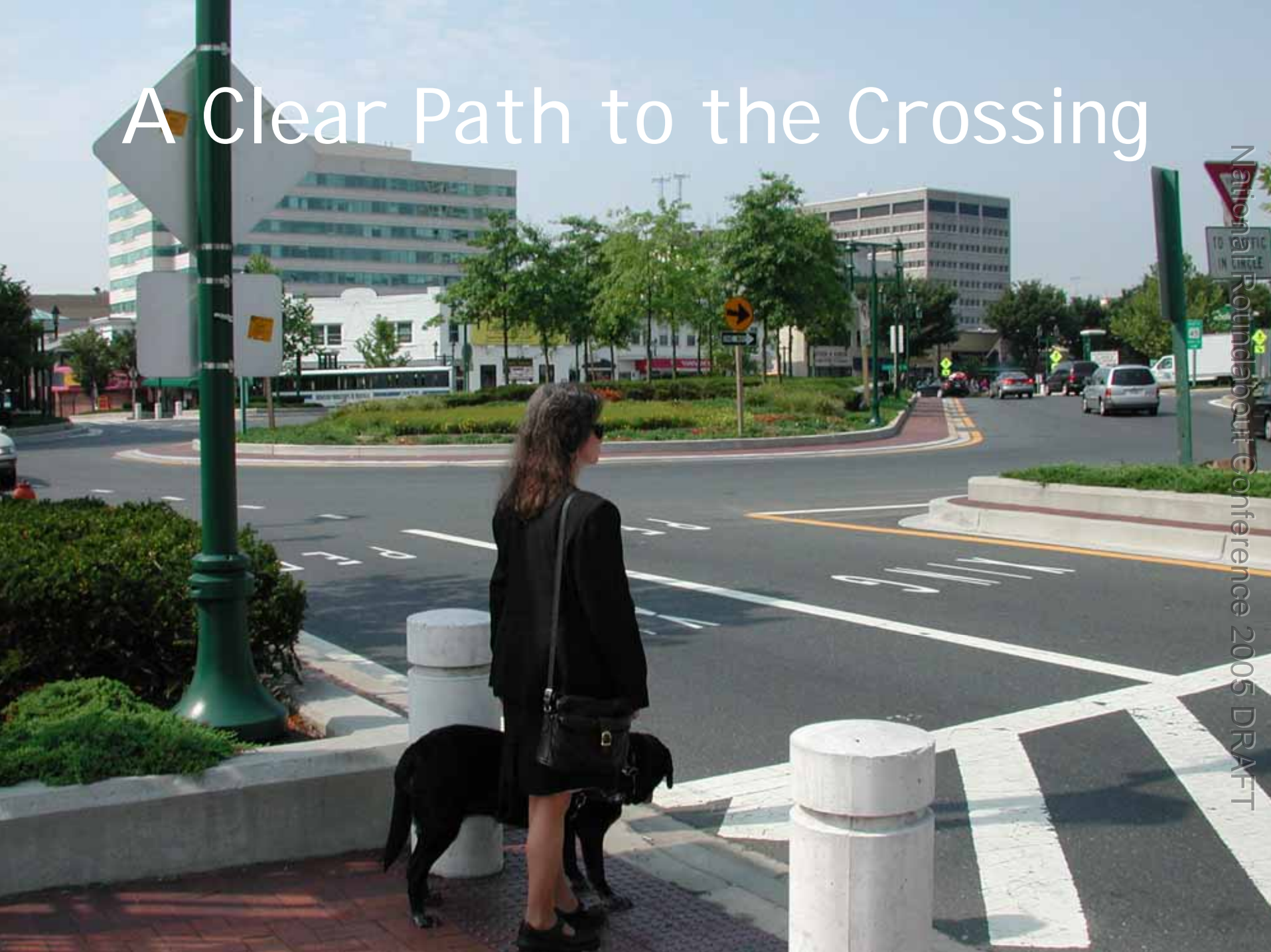
What makes a roundabout usable by all pedestrians?

National Roundabout Conference 2005 DRAFT

# A Clear Path to the Crossing



# A Clear Path to the Crossing



# On Both Sides of the Crossing



# "Driver's Always Yield to Pedestrians"



National Roundabout Conference 2005 DRAFT

# Detectable Warnings in the Medians



National Roundabout Conference 2005 DRAFT

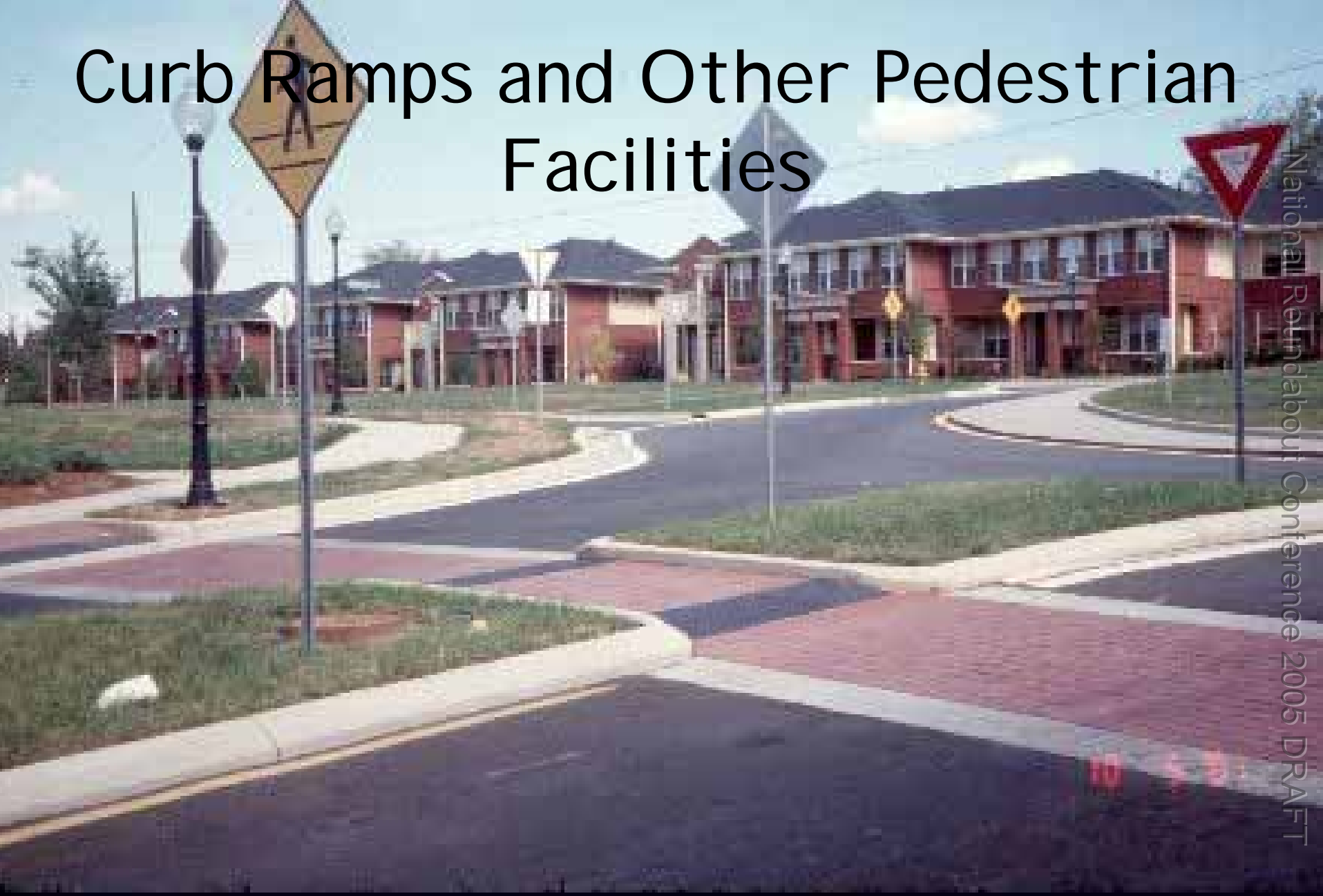


# Median Design



09/27/2004

# Curb Ramps and Other Pedestrian Facilities



National Roundabout Conference 2005 DRAFT

This Is NOT  
What We  
Intended When  
We Asked  
About  
Signalization of  
Roundabouts In  
The Draft  
Guidelines!



# Pedestrian Facilities?



# Pedestrian Facilities?



National Roundabout Conference 2005 DRAFT

# Multi-Lane Roundabouts Need Some Sort of Pedestrian Signal System



National Roundabout Conference 2005 DRAFT

# Multi-Lane Roundabouts Need Some Sort of Pedestrian Signal System



National Roundabout Conference 2005 DRAFT

# Pedestrian Signal System





# Pedestrian Signal System



# Pedestrian Signal System



# Examples of APS



National Roundabout Conference 2005 DRAFT

# Examples of APS



# Single Lane Roundabouts May Not Need A Signal The Jury Is Still Out



National Roundabout Conference 2005 DRAFT

# Single Lane Roundabouts May Not Need A Signal The Jury Is Still Out



National Roundabout Conference 2005 DRAFT

SEP 24 2002





# Contact Info:

Scott J. Windley  
Accessibility Specialist  
US Access Board

1331 F Street NW Suite 1000  
Washington, DC 20004

[windley@access-board.gov](mailto:windley@access-board.gov) (email)

(202) 272-0025 (voice)

(202) 272-0081 (fax)

[www.access-board.gov](http://www.access-board.gov) (website)